

Friends of the Observatory *e-Newsletter*

May 2006
513-321-5186

Published by the Friends of the Cincinnati Observatory Center
www.cincinnatiobservatory.org

Volume 17 No. 5
Bill Cartwright, editor wcartw@aol.com



A Letter from President Hunter

Dear Friends:

Next few months should mark the return of good viewing weather so Stonelick should get popular again with the general public. So in addition to having a good time we will need lots of telescopes out there for public viewing. We still do not have a guest speaker for Scope Out so anyone with an idea please feel free to make a suggestion. Apollo Rendezvous is coming up on June 16-17, anyone who is planning to man the COC/FOTO booth needs to get their names in.

On June 21-24 Star Quest will be taking place at Greenbank. FOTO and the Observatory maintain a coffee/snack table in the "lobby" during the FOTO meetings. We need people to help out with set up and clean up of this area. **Craig Niemi** has been kind enough to set up the table before the meetings and **Bill Bachelder** and **Mary Hamilton** have been kind enough to take it down and clean up. We need more members to step up and give Craig, Bill, and Mary a break; it's not a lot of work, but after 6 months of performing this small task, it gets old. If enough people pitch in a roster can be established to make it easy on everyone. Clear Skies everyone.

FOTO's May Meeting

Our May meeting will be held at 7:30 pm on Thursday, May 4th at the Observatory. **Paul Nohr** will give this month's presentation on Atmospheric effects.

Last Month's Meeting

By Rick Hunter

Dr. Flick's presentation including the section on extra solar planets was interesting as ever.

Last month I combined the attendance and volunteer for Scope Out sign-up sheet, this led to some confusion. I won't make that error again.

Did You Know....

In a major breakthrough in 1571, Kepler discovered that the planets move in elliptical orbits, not circular orbits.

FOTOKids Meeting

By Mike Helfen

FOTOKids next meeting will be Friday, May 5th, at 8:30 pm. (Time changes in May to 8:30 till next Fall)

We are continuing a project that is following the Sky Puppies program as outlined by the Astronomical League (<http://www.astroleague.org/al/obsclubs/skypuppy/skypuppy2.htm>). This may take several months to complete, but you can jump in at any time. Weather permitting, we'll open up the telescopes for viewing and work on project requirements.

If you have a kid interested in astronomy between the ages of 8 and 14, find out more about FOTOKids by contacting Mike Helfen @ fotokids@fuse.net or 513-378-2134.

Stonelick Lake Star Parties

By Scott Naylor

Our next Star Party will be **Saturday, May 20th**, with a cloud date of the following Saturday, May 27th. It's held at Stonelick Lake State Park, which is open to the public all night year 'round.

For updates, directions, or information, phone **Scott Naylor** at 513-575-5556.

The Star Parties of Old

From Scott Naylor

The idea of a star party is not new and allegedly goes back at least as far as George III of the United Kingdom, who was passionately interested in astronomy and mathematics. On nights when poor weather blocked the view of the real stars and planets, attendants are said to have hung paper lanterns marked with drawings in the trees around the royal palace to provide something else for the King and his guests to spot through their telescopes.

Source: Wikipedia

Word of the Month

By Greg Huber

“Cynthia's Lamp”

Word for April: “Cometary Globule”

The Answer

A “cometary globule” has nothing to do with comets at all. They are small dark nebula that look like comets. They are usually found near stars that are just being born.

May's Trivia Question

By Greg Huber

Here's an easy one.... What was the date of the first moon landing. And who were the first men to walk on the moon?

April's Trivia Question

Each culture had their own constellation pictures in the sky. What figure did the Australian aborigines place in the sky in the location that we call Orion?

The Answer

The native Australians saw what we call the constellation of Orion as a butterfly. Next time you see the great hunter, see if you can't see it as a butterfly.

Craig's Corner

By Craig Niemi,

Observatory Executive Director

Work continues to move forward on several fronts. Development and fund-raising plans are nearing completion and the real job of matching Observatory needs with suitable funders is about to begin. "Wish lists" were asked for and of course Paul's was by far the wildest.

We had a wonderful visit from UC President, Nancy Zimpher. **John Ventre** gave one of his terrific history tours highlighting the UC connection. Board member **Charlie Schiff**, long-time COC supporter **Lyn Marsteller**, and **Craig Niemi** were there to answer her questions on restoration, budgets and programming.

It didn't hurt that Dean's group from Clark Montessori was there too. Dr. Zimpher came away a believer in the Observatory. We're making plans for a return visit this Fall of Dr. Zimpher and her senior staff.

The current roster of FOTO members has been entered in PastPerfect, our new membership, fund-raising and museum collection software. PastPerfect will add much needed accuracy to the membership process, contact information and newsletter mailings (snail and E-mail).

While the list has been checked several times there will undoubtedly be a few mistakes so please review your membership information and if anything needs to be updated, let me know.

If you have email please send your address to (observatory@fuse.net). It will significantly improve communications overall, and help us stay in touch with observatory news and upcoming events. E-mail will also save precious membership dollars for programming and preservation that would otherwise just go to printing and postage. ***(Your membership and contact information is strictly confidential!)***

See you at the "O".

Jupiter Days

By Dean Regas

“Four Evenings to See the Giant of the Solar System” will be at the Observatory May 25 to 28 from 8:30-11:00 pm.



The king of the solar system is back. Jupiter has returned to the evening skies with its fabled red spot and 63 moons.

The Observatory celebrates Jupiter every night May 25-28 with classes about our largest planet and tours of the Observatory. Then, see the cloud tops of Jupiter and the four Galilean moons through our historic 1843 and 1904 telescopes (weather permitting). We will also take a closer look at the breathtaking ringed planet, Saturn.

Reservations required for the classes which begin every night at 9pm. No reservations are needed for viewing. Drop in between 8:30-11pm.

Cost: \$4 per person.

To make reservations for the classes please call 513-321-5186. For more information visit:

www.cincinnatiobservatory.org

Water On The Moon?



A small spacecraft named LCROSS will hitch a ride to the moon in 2008. Its mission: to hit the moon near the lunar south pole and look for signs of water among the debris.

http://science.nasa.gov/headlines/y2006/10apr_lcross.htm?list739819

Thanks to the Telescope Pointers

By John Ventre

The "Telescope Pointers" are the volunteers who have the responsibility of pointing the telescope at the beautiful celestial objects during the public viewing sessions. These sessions are typically conducted on Thursday and Friday evenings and on an occasional Saturday evening. Thanks to the crew who contribute many hours of service each year to the COC.

They include: **Bill Bachelder, Andy Bruggeman, John Gehlenborg, Jim Groen, Tom McDonough, Jim Morrow, Craig & Valerie Niemi, Scott Naylor, JoAnne Pedersen, Jim Schiear, Steve Scholl and Kirk Schrotel.**

For Sale

31mm Tele Vue Nagler eyepiece. Excellent condition. \$495.00.

27mm Tele Vue Panoptic eyepiece in excellent condition. \$295.00.

Contact Dick Wessling pinesop@aol.com, or call 513-831-7045 evenings, 513-753-2016 daytime.

Planetary Society Now On Radio

The Planetary Society is now on radio on more than 70 stations, downloadable to your computer, and via podcast.

Guests and topics on recent shows include:

-The Search for Extraterrestrial Intelligence. Guests: Paul Horowitz, Andrew Howard.

- Europa's Ocean. Guest: John Delaney LPSC and Stardust Guest: Scott Sandford.

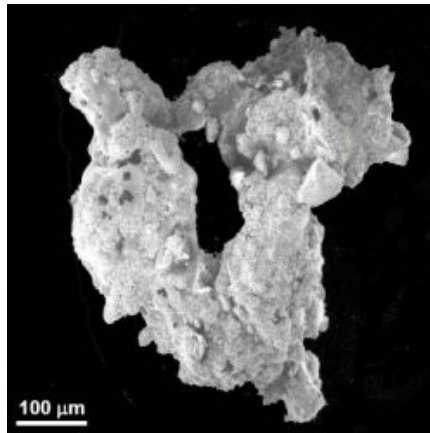
Give us 30 minutes, and we'll give you the Universe! Listen at:

<http://www.planetary.org/radio/>

Did You Know.....

Everything in the universe is part of something larger.

Lunar Dust Buster



A tiny jagged piece of moon dust.

NASA researchers have built a device that picks up moon dust and takes it for a ride on an electrodynamic wave--like a surfer on the ocean. Their invention could come in handy when astronauts return to the Moon.

http://science.nasa.gov/headlines/y2006/19apr_dustbuster.htm?list739819

Did You Know....

In a narrow band around 550 miles above Earth, there are more than 100,000 man-made pieces of space debris in orbit. A bolt traveling at 17,000 mph, packs the same punch as a 400 pound safe traveling at 60 mph.

Stardust@home Update



Artist's depiction of Stardust on final approach home.

In order to protect the priceless Stardust samples from potential water damage if fire-sprinklers were activated, the Stardust@home team built a custom-designed wall barrier inside the scanning laboratory at the Johnson Space Center (JSC) in Houston. The building of the barrier, and the lab recertification process

by JSC which followed, took several weeks. Scanning of the aerogel collector is now ready to begin, and the first Stardust@home movies are scheduled to be sent to Stardust@home volunteers in early May 2006. Find out more about Stardust@home: <http://planetary.org/programs/projects/stardustathome/>

Sites to Look for Life On Mars



OMEGA instrument has identified clay beds which supported life in the past.

The Mars Express has completed an extensive map of minerals across the surface of Mars, pointing at the places future rovers might want to search for life. This new analysis shows that lakes and oceans might have been present on Mars, but they disappeared more than 4 billion years ago. That wouldn't have given life much time to get a serious foothold before the whole planet became a desert. These pockets of hydrated minerals would be the best places to try to find past life. http://www.universetoday.com/am/publish/mars_omega_life.html?2242006

For Sale

10 inch Meade LXD 55 UHTC Schmidt Newtonian telescope with Autostar in excellent condition. FL - 1016MM, FR f/4, German type equatorial alignment, 12V DC. Includes 40MM, 32MM, 26MM, 20MM, 15MM, 12.4MM, 9.7MM and 6.4MM eyepieces Filters - green 56, purple 38a, yellow 8, orange 2. Price: \$950.

Call Joe Lowry at 513-719-6337 days, 232-9829 nights and weekends.

A Comet Break-Up

Dying comet 73P/Schwassmann-Wachmann 3 continues to break apart. Astronomers are tracking at least 20 fragments approaching Earth for a harmless but beautiful close encounter in May.



Fragment B of the comet has brightened 15-fold since April 2nd. This signals a possible breakup into even more fragments.

Visit Spaceweather.com for sky maps, images, and more information.

Another story....

http://science.nasa.gov/headlines/y2006/24mar_73p.htm?list739819

Interstellar Deathray Not Likely to Hit Earth



A new study finds that the chances of a gamma ray burst going off in our galaxy and destroying life on Earth are comfortingly close to zero.

[Gamma ray bursts](#), or GRBs, are focused beams of [gamma radiation](#) emitted from the magnetic poles of black holes formed during the collapse of ancient, behemoth stars. They can also form when dead [neutron stars](#) merge with each other or with [black holes](#).

It's [been speculated](#) that if a GRB went off near our solar system, and one of the beams hit Earth, it could set off a global mass extinction.

http://www.space.com/scienceastronomy/060424_mm_star_deathray.html

Mars Rovers Power On



Those long-lived NASA Mars rovers—Spirit and Opportunity—remain in fairly good shape, with one robot in survival mode as Martian winter arrives while its twin snakes its way across a taxing terrain of sand dunes to reach a striking target.

"Both rovers are doing really well right now," said Steve Squyres of Cornell University, lead scientist for the Mars Rover Exploration project. "We had a bit of a scare with Spirit awhile back, losing use of the right front wheel less than a hundred meters shy of our intended wintering spot on McCool Hill," he told *SPACE.com*.

Squyres said the wheel breakdown came at a time when the terrain was treacherous, a site of soft sand and salt deposits. "That kind of stuff is hard enough to drive in with six wheels, and with five it was just about impossible. It was really frustrating, being that close to the place we wanted to get to ... and not being able to reach it."

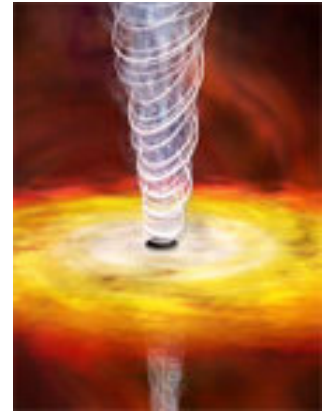
Thanks to the tenacity of rover drivers back on Earth, Spirit was unstuck, then backtracked onto more solid ground—dragging its no longer working wheel. An alternate winter-over spot for the rover was picked on "Low Ridge"—named after George Low, the late NASA Deputy Administrator who played a key role in the Apollo lunar landing effort.

"Low Ridge is actually a beautiful spot ... one of the most scenic places we've been at Gusev. And there's lots of good science nearby," Squyres said. Within just a few meters of the Spirit rover, there is finely layered bedrock, blocks of vesicular basalt, and what appears to be very salt-rich soil.

http://www.space.com/scienceastronomy/060425_rovers_update.html

Black Holes are Actually Green

A new study finds that the supermassive black holes at the hearts of some galaxies are the most fuel efficient



engines in the universe.

"If you could make a car engine that was as efficient as one of these black holes, you could get about a billion miles out of a gallon of gas," said study team leader Steve Allen of the Kavli Institute for Particle Astrophysics and Cosmology at Stanford University. "In anyone's book, that would be pretty green."

The finding, made using NASA's Chandra X-ray Observatory and announced in a media teleconference today, is giving scientists insights into how supermassive black holes generate energy and how they affect the galaxies where they make their homes.

'Quiet' black holes

[Black holes](#) are regions of space where gravity is so strong that matter and light can't escape once they pass the [event horizon](#), a spherical boundary surrounding the black hole.

However, inflowing matter that hasn't yet passed this point of no return can—through friction and interaction with the black hole's strong magnetic field—release energy in the form of either diffuse light or focused jets of energy.

"Once gas comes within a distance about a million times larger than the event horizon of the black hole, it becomes [gravitationally captured](#)," Allen explained. "At this point the gas becomes fuel for the black hole engine."

http://www.space.com/scienceastronomy/060424_green_blackhole.html

Scope Out Planning Meeting

By Rick Hunter

Our next Scope Out planning meeting will be held at 7 pm on Wednesday, May 24th in the West Room of the Herget Building.

These are the dates of the planning meetings for the rest of the year: June 21st, July 19th, and August 23rd.

The Planning Meeting

Our next planning meeting will be held at Hyde Park Grill and Cafe on Erie Avenue near Marburg on Thursday May 11th at 6:00 pm. Planning meetings are open to all members.

Upcoming FOTO Events

May 25-27th Jupiter Nights
June 17 Mars, Saturn Conjunction
June 16-17 Apollo Rendezvous
June 21-24 Star Quest at Greenbank, WV

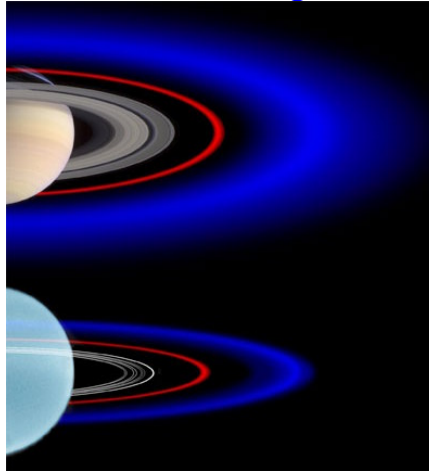
Building an Antimatter Spaceship



If you're looking to build a powerful spaceship, nothing's better than antimatter. It's lightweight, extremely powerful and could generate tremendous velocity. However, it's enormously expensive to create, volatile, and releases torrents of destructive gamma rays. NASA's Institute for Advanced Concepts is funding a team of researchers to try and design an antimatter-powered spacecraft that could avoid some of those problems.

http://www.universetoday.com/am/public/antimatter_mars.html?1942006

Uranus' Newly Found Moon Embedded In A Blue Ring

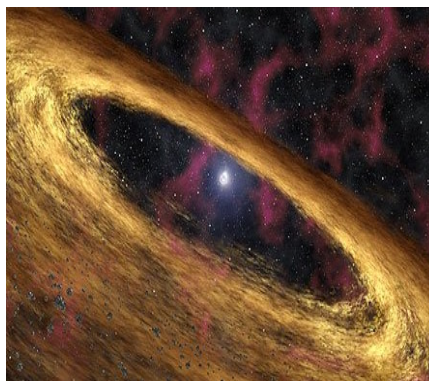


A schematic view of the outer rings of Saturn and Uranus, in which each system has been scaled to a common planetary radius

The outermost ring of Uranus, discovered just last year, is bright blue, making it only the second known blue ring in the solar system. Both blue rings are associated with small moons.

<http://spaceflightnow.com/news/n0604/06uranusmoon/>

Planets Found Around Dead Stars



An artist's concept of a planet-forming disk around pulsar 4U 0142+61

NASA's Spitzer Space Telescope has found a disk of dusty debris surrounding a long-dead star. It is the kind of disk where planets are born, raising the possibility that second-generation planets can form around stars after they go supernova. FULL STORY at

http://science.nasa.gov/headlines/y2006/05apr_pulsarplanets.htm?list739819

Dedicated SETI Optical Telescope Launched

On April 11, the [Planetary Society](#) dedicated an optical telescope at an observatory in Harvard, MA, to search for light signals from (c'mon, don't laugh) alien life. The new telescope is said to be the first ever dedicated solely to [Optical SETI](#) (OSETI) search.



Its 72-inch primary mirror is larger than any optical telescope in the U.S. east of the Mississippi river. Under the direction of Harvard University physicist Paul Horowitz and his team, The Planetary Society's new telescope will conduct a year round, all-sky survey, scanning the entire swath of our Milky Way galaxy visible in the northern hemisphere.

"This new search apparatus performs one trillion measurements per second and expands by 100,000-fold the sky coverage of our previous optical search," said Horowitz.

Alien civilizations are thought by many to be at least as likely to use visible light signals for communicating as they are to use radio transmissions. Visible light can form tight beams, be incredibly intense, and its high frequencies allow it to carry enormous amounts of information. Using only Earth 2006 technology, a bright tightly focused light beam, such as a laser, can be ten thousand times as bright as its parent star for a brief instant. Such a beam could be easily observed from enormous distances.

[Link](#) to Planetary Society website, [Link](#) to OSETI project, [Link](#) to Radio SETI project.

Did You Know....

Titan is second only to Earth in its ability to harbor organic molecules.

Dava Sobel Interview

By Dean Regas



I experienced my first total solar eclipse on March 29, 2006 on board an eclipse cruise off the coast of Turkey. On board were 300 other eclipse chasers including world-renowned author of Longitude, Galileo's Daughter, and The Planets, **Dava Sobel**. After the eclipse we discussed her eclipse experiences.



*A picture taken at the eclipse
by Adam Clayson*

Dean - How many total eclipses have you seen?

Dava - This was my fourth. And all of them have been aboard ships. 1991 off the coast of Baja California. 1999 in the Black Sea. 2005 past the Galapagos. Actually we were 1,000 miles out into the ocean. The ship was not designed to be an ocean-going vessel. It was actually a pretty scary trip with the ship pitching – this one was nothing in comparison. People were getting sick, falling, having accidents. Even the crew was scared about the journey. That's what got me.

Dean - What are some interesting research stories that come to mind?

Dava - The Clockmaker's Museum in Columbia, PA. I researched in a

museum with all these working clocks. Everything in the room ticked.

Dean - Is astronomy still "a boy's club?"

Dava - No I have never felt excluded. There is only one experience that I have that is close to what you are asking. There was a Nova special on Longitude that was 60 minutes long. The British version of the special was only 55 minutes long. So the five minutes they cut were of me. I didn't appear on the show at all.

Dean - Well, you only wrote the book that the whole show was based on.

Dava - Exactly, the author is not important. In fact the news got back to me, someone overheard the producer say off the record, 'we don't need that American woman of our show.'

Dean - How was this eclipse unique?

Dava - It had the brightest diamond ring I've ever seen. And it had a different corona. It was much more rectangular – less flower-like.

Dean - Do you consider yourself an eclipse chaser?

Dava - Oh yes. It shapes my travel.

*We hope Dava will visit the Observatory on her book tour this fall.

Space Station Sightings

The International Space Station (ISS) is now making a series of bright evening flybys of cities and towns in the United States. It's easy to see, if you know when to look.

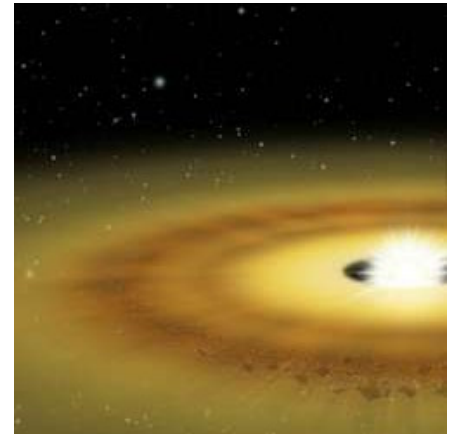
Sign up for SpaceWeather PHONE (<http://spaceweatherphone.com>) and they'll call you when the space station is about to fly over Cincinnati.

A Cosmic Mystery Unraveled

Scientists have discovered what is thought to be the strongest magnetic field in the Universe. They show that violent collisions between neutron stars in the outer reaches of space create this field, which is 1000 million million times larger than our Earth's own magnetic field.

<http://spaceflightnow.com/news/n0604/02magnetic/>

Cloud of Debris Around Beta Pictoris



*A scientifically accurate model of
Beta Pictoris and its disk.*

April 22, 2006 - The disks of gas and dust that surround newborn stars are known as proto-planetary disks; which are thought to be regions where planets will eventually form. These disks disappear as the stars mature, but some stars can still be seen with a cloud of material around them called debris disks. One of the most famous of these is the disk surrounding Beta Pictoris, located only 60 light years away. http://www.universetoday.com/am/publish/subaru_beta_pictoris.html?2242006

The 36th Annual Apollo Rendezvous

At the Boonshoft Museum of Discovery, 2600 Dewese Pkwy., Dayton, OH

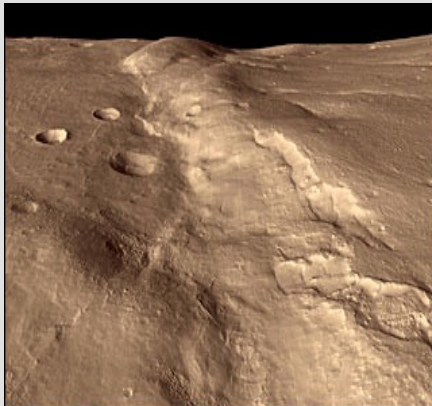
6-10 pm Friday, June 16th and
9 am - 5 pm Saturday, June 17th

For maps and area accommodations go to www.mvas.org. For more information please contact ronsherman@earthlink.net or call 513-423-4717.

Did You Know....

A supermassive black hole's process of generating energy from the matter falling towards its gravity well is much more efficient than nuclear or fossil fuels. A car with such fuel efficiency could drive for one billion miles on a single tank of gas.

First Color Pictures from Mars Reconnaissance Orbiter



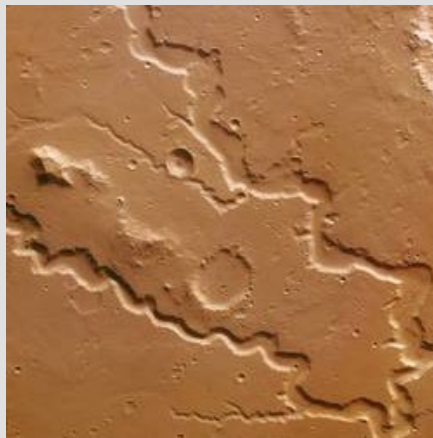
The first color image from NASA's Mars Reconnaissance Orbiter taken on March 24 reveals pocked craters, carved gullies and wind-formed dunes.



NASA scientists say the southern half of this infrared photo is brighter and bluer than the northern half, perhaps due to early-morning fog in Mars' atmosphere.



Part of a full resolution image from the High Resolution Imaging Science Experiment camera on the spacecraft shows an area in Mars' mid-latitude southern highlands.



These steep sided channels range in width from a few hundred meters to more than 5km (3 miles) across, and look like they were formed by quickly flowing water. But their origin is debated by researchers. Some think that liquid flowed under the surface and the ground collapsed above it, while others think that water did once flow on the surface.

http://www.universetoday.com/am/publish/nanedi_valles_system.html?2642006

Inconstant Speed of Light?

Objects far away, like quasars, are also long ago. Since it takes time for light to reach us, quasar light must have begun its journey eons ago. This is the light that hints at a smaller alpha than is measured in the lab, raising the tantalizing possibility that alpha was smaller in the distant past. This constant, in other words, might not be. It might have grown.

The speed of light may be acting up, too. Ultrahigh energy cosmic rays aren't supposed to exist, but they do. One explanation (you'll have to take this on faith) may be that the speed of light varies over time. The consequences are kind of cool.

If c really changes, then near black holes the speed of light would "congeal" to zero. Around hypothesized beasts called spacetime warps, or cosmic strings, the speed of light would surpass c (299,792,458 meters per second), allowing for warp-speed travel. "A varying speed of light would have dramatic cosmological consequences," says Dr. Barrow. "Maybe too dramatic."

Hubble's Stunning View Of Nearby Dust Clouds

The yearly ritual of spring cleaning clears a house of dust as well as dust "bunnies," those pesky dust balls that frolic under beds and behind furniture. NASA's Hubble Space Telescope has photographed similar dense

knots of dust and gas in our Milky Way Galaxy. This cosmic dust, however, is not a nuisance. It is a concentration of elements that are responsible for the formation of stars in our galaxy and throughout the universe. <http://spaceflightnow.com/news/n0604/04globules/>

Could Einstein Have Been Wrong?

According to Einstein's theory of relativity, space travel is a good way to stay young. Or is it? Cosmic rays hitting human chromosomes can damage "telomeres" and cause premature symptoms of aging. NASA researchers are looking into this strange effect; what they learn about aging could benefit everyone, on Earth and in space.

FULL STORY at

http://science.nasa.gov/headlines/y2006/22mar_telomeres.htm?list739819

Cassini Changes Earlier Belief About Saturn A-Ring

Views of Saturn's stunning ring system from above by the Cassini spacecraft now orbiting the planet indicate the prominent A ring contains more debris than once thought, according to a new University of Colorado at Boulder study. <http://spaceflightnow.com/cassini/0604/06aring.html>

Did You Know....

The International Space Station completes an orbit in 90 minutes, meaning that every 45 minutes its astronaut crew catches a sunrise and sunset.

Mercury's Formation Impact Splattered Earth



New computer simulations of Mercury's formation show the fate of material blasted out into space when a large proto-planet collided with a giant asteroid 4.5 billion years ago. The simulations, which track the material over several million years, shed light on why Mercury is denser than expected and show that some of the ejected material would have found its way to the Earth and Venus. <http://spaceflightnow.com/news/n0604/05mercury>

Magnetic Moondust?

Researchers have noticed something odd about fine-powdered moondust--it's magnetic. This raises the possibility that magnets could be used for dust abatement when astronauts return to the moon.

FULL STORY at

http://science.nasa.gov/headlines/y2006/04apr_magneticmoondust.htm?list739819

Did You Know....

Saturn's moon Enceladus has now been promoted to one of the most exciting places in the solar system. Towering plumes of what may be liquid water erupt from the south pole.

Solar Wind Whips Up Auroral Storms On Jupiter And Saturn

Studies of Jupiter's auroras have challenged current theories about the processes controlling the biggest light-shows in the Solar System.

<http://spaceflightnow.com/news/n0604/05auroras/>

An Unusual Bang In The Far Universe

Almost 40 years have passed since top secret nuclear weapon warning satellites accidentally discovered bursts of high energy gamma rays coming from space. Although many thousands of gamma ray bursts have since been detected, the origin and nature of these bursts is still not well understood. <http://spaceflightnow.com/news/n0604/05swift/>

Did You Know....

In the Sun, electrified gas called plasma, forms into huge clouds known as prominences.

An Odd World



This stunning false-color view of Saturn's moon Hyperion reveals crisp details across the strange, tumbling moon's surface. The view was obtained during Cassini's close flyby on Sept. 26, 2005.

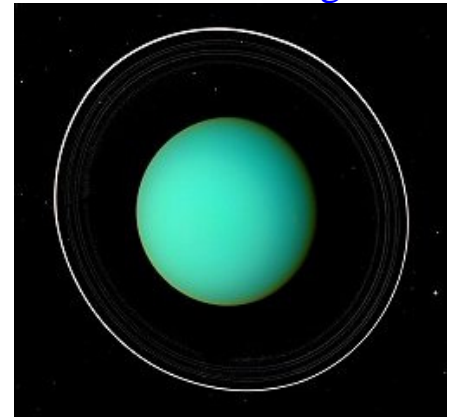
Massive Amounts Of Water Released By Comet Hit

A team of scientists used NASA's Swift satellite to observe the collision of NASA's Deep Impact spacecraft with comet Tempel 1.

They reported that the Swift observations show that the comet grew brighter and brighter in X-ray light after the impact and the total mass of water released by the impact was 250,000 tons.

<http://spaceflightnow.com/news/n0604/04deepimpact/>

Venus Meets a Planet Named George



This month, Venus can guide you to a naked-eye planet that ancient astronomers inexplicably failed to notice.

FULL STORY at

http://science.nasa.gov/headlines/y2006/11apr_george.htm?list739819

SETI Optical Telescope

Thanks to incredible support, the Planetary Society expect to be scanning the skies at the first-ever observatory dedicated to Optical SETI by about the time this newsletter is released!

Find out more about the SETI telescope at:

http://planetary.org/programs/projects/seti_optical_searches/

Did You Know....

The most powerful electrical storm ever detected on Saturn is the source of new radio emissions.



This is The End

This document was created with Win2PDF available at <http://www.daneprairie.com>.
The unregistered version of Win2PDF is for evaluation or non-commercial use only.